

Green Coffee Trade of New York

☛ Telling of the Green Coffee Association and other interests of the importers, jobbers, brokers, and commission houses.

GREEN COFFEE ANNUAL

Richard Hole, Jr. is Elected President—Other Selections Include Members of Board of Directors, Adjudication and Nominating Committees

AT the annual meeting of the Green Coffee Association of New York City held on September 10th, Richard Hole, Jr., of Mitchell Bros., coffee importers, was elected president, succeeding Philip R. Nelson, Ruffner, McDowell & Burch, Inc.; David E. Fromm of T. Barbour Brown & Co., brokers, was chosen vice-president, and Fred H. Koepfel of W. J. Donohue & Co., brokers, treasurer.



Mr. Richard Hole, Jr., Lee and M. M. Mangual. The following members to serve on the Board of Directors for two years were elected: J. J. Day, R. A. Medina, B. A. Livierato, P. R. Nelson and T. W. Dennison. Members of the Adjudication Committee were selected as follows: F. H. Silence, A. H. Barklie, Leon Taffae, H. A. Ahrens, E. J. Finnegan, C. A. Hart, F. N. Van Horn and W. B. Carswell. The following nominating committee for 1936 was named: S. H. Dorr, Karl Glasser, A. F. Haenlein, Sr., G. W. Lawrence and C. A. Mackey.

CAREER OF NEW PRESIDENT

Richard Hole, Jr., the newly elected president, has been an active figure in the New York green coffee trade for the past thirty years. He was born in New York on July 3, 1888. Following an education in public, high and City College of New York, he started in the coffee business with Gustave A. Jahn & Co., coffee jobbers, New York in 1905. Six months later he joined Mitchell Bros., coffee importers, with which concern he has been identified

since. He is in charge of the concern's buying and selling of green coffees.

Mr. Hole was elected vice-president of the Association in 1933 and has served in that capacity during the past two years. He is a member of the Richmond County Country Club, Squadron "A" Veterans Association, New York, and is a golf enthusiast. In 1920, he married Miss Isobel Witherspoon of New York. He lives in West New Brighton, Staten Island, N. Y., and has three children, a son and two daughters.

COFFEE INFORMATION TABLE

In the Annual Coffee Supplement, 1882 to 1935, inclusive, issued in tabular form, the New York Coffee and Sugar Exchange gives figures for crop years, July 1-June 30, covering coffee production, arrivals, deliveries, world's visible supply, volume of sales, futures (high and low prices) and futures and spot prices.

World coffee production, 1934-35, is given as 21,783,000 bags (Brazil, 14,102,000; other countries, 7,681,000).

Arrivals in United States, 11,348,069 (Brazil, 7,622,213; other kinds, 3,725,856); in Europe, 9,337,000; United States and Europe, 20,685,069.

World's consumption, as indicated by deliveries: United States, 11,561,955; Europe, 9,981,000; Southern Ports, 1,137,000; total, 22,679,955.

World's visible supply of coffee, July 1: 23,520,413.

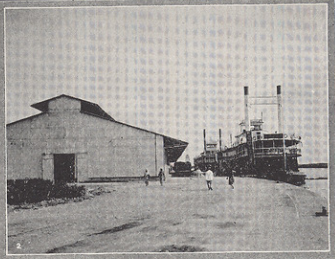
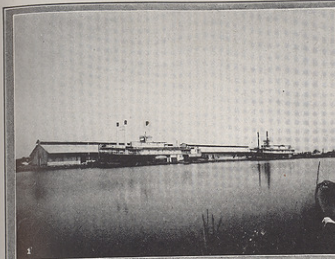
BRAZILIAN WARRANT AGENCY

Special Correspondence

LONDON, August 15, 1935.—The Brazilian Warrant Agency and Finance Company, Limited, according to the statement of Mr. A. Whitworth, Chairman, at the annual meeting, paid for the year 1934 4 per cent on its Ordinary Shares, made possible through the authorization to reduce the nominal share value from ten to two shillings. On the Preference Shares an interim dividend of 3½ per cent and a final dividend of 3½ per cent were paid. Total payments amounted to £26,510 of the profit and loss account showing a balance of £41,994-14-9. During the year advantages were taken of the relaxed rules on Brazilian exchange control, with the result that certain surplus cash balances were transferred to London. Like favorable conditions held also for the Cambuhy Coffee and Cotton Estates, Limited.

It is matters of exchange, in Brazil and elsewhere, that the company finds most troublesome. "As regards the general business of the company," Mr. Whitworth said, "we are a trading concern,

NEW COFFEE WAREHOUSE AT BARRANQUILLA, COLOMBIA



CORRUGATED IRON CONSTRUCTION INSURES GOOD PROTECTION FOR COFFEE AWAITING SHIPMENT
1—Front view of warehouse; 2—East view; 3—West view; 4—Interior of modern warehouse.

The accompanying views indicate the effort being made to develop Barranquilla, Colombia, into a modern river port. With the completion of the large terminal at the rival port of Cartagena, a very substantial part of the coffees coming down the river were being diverted there, and as was to be expected, the merchants and shipping interests at Barranquilla began an active campaign for the improvement of their port. The warehouse shown in accompanying illustrations is of light steel, corrugated iron construction, familiar in tropical parts, but it does afford good protection to coffee cargoes awaiting shipment, in contrast to the dilapidated warehouses used by a number of the River Lines.

buying and merchandising coffee and cotton, lending money to coffee planters and controlling or owning subsidiary companies, which either grow coffee or cotton or depend upon the marketing and warehousing of coffee for their activities. We have no contractual relations, either with the Government of Brazil or with any of the States."—MINGING LANE.

SPECIAL COFFEE MAKER OFFER

The Silax Company, Hartford, Conn., is making a special offer, expiring September 25th, on its Buffet Service coffee maker. Twelve molded trays are being given with the purchase of a buffet coffee maker at the price of the coffee maker alone. Through the use of the buffet service, coffee may be served on the tray in a cup and saucer, with plate, napkin and silver. The

concern points out that today there is a definite trend away from formal luncheon and supper parties, and more and more people are using buffet service. The use of the tray makes it unnecessary for the guest to balance a cup and saucer in one hand while attempting to hold a plate and silver in the other.

BRAZIL-NEW YORK SAILINGS

Furness, Withy & Co., Ltd., general agents for the Furness Prince Line, New York, announce the following scheduled express passenger sailings from River Plate and Brazilian ports to New York:

Vessel	Stnaos	Rio de Janeiro	Due New York
Northern Prince	Sept. 18	Sept. 19	Oct. 2
Southern Prince	Oct. 2	Oct. 3	Oct. 16
Eastern Prince	Oct. 16	Oct. 17	Oct. 30